

Schoharie County Items of Historical/Genealogical Interest

BLenheim

The new **Blenheim Bridge** opened in the fall of 2018 to replace the original 232 foot covered wooden bridge that opened for travelers in 1855 and withstood the sands of time until Hurricane Irene swept it away in 2011. The replacement (featured on Nova) is just off Rte. 30, North Blenheim.



The **Bridge One-Room Schoolhouse** that taught scholars until 1949, sits across from the bridge on Eastside Rd. off Rte. 30, North Blenheim.

Lansing Manor at the NY Power Authority Visitors Center 1378 State Rte. 30, North Blenheim, 800-724-0309, www.nypa.gov. Lansing Manor is filled with authentic furnishings and priceless antiques from the first half of the 19th century. The Manor, listed in the National Register of Historic Places, contains 10 large rooms on two floors, plus a below-ground kitchen and other utility rooms and is a classic example of Federal period architecture. The Manor is operated by NYPA and is open daily from May through October for guided tours from 10am- 5pm. **Admission to the Manor, Visitor's Center, and events, is always free.**



CARLISLE



Wessell's Hotel, Carlisle, N. Y., Built in 1808.

One-Room Schoolhouse #5 At one time, the Town of Carlisle had nine one-room school houses, of which our most visible is School House No. 5 at the corner of Crommie Road and Route 20. The school appears on an 1872 map of Carlisle and was closed in 1956. Its school bell, built by the McShane Foundry in Baltimore, Maryland was purchased in 1891 and now resides in Carlisle's Town Hall. The schoolhouse is in a state of disrepair, but passersby can still appreciate its structure and its nostalgia. Please observe it from the street or sidewalk, as it is privately owned and not open for tours.

Carlisle Walking Trail While touring schoolhouses, make a rest stop at the Carlisle Walking Trail, located at the Carlisle Town Hall on Crommie Road, a half-mile from the school house. Built by a grass roots recreation committee, the .8 mile trail is level, kid and dog friendly, and loops around to start and stop in the parking lot. Encompassing a wide-open field that harbors birds year round, butterflies and wildflowers in three seasons, and can be skied or sledged in the winter, the CWT gives walkers a relaxing place to exercise safely. Open year round, dawn to dusk.



COBLESKILL (See also Howes Cave)

Cobleskill Library History Room, 110 Union St., Cobleskill NY 12043. Hours: T, Th 10-8pm, W, F 10-5, S 10-1. The Community Library History Room contains local history, bound Times Journal newspapers from 1972 on & Cobleskill-Richmondville yearbooks. Room available by appointment. Best to call ahead with information request so items can be pulled for your appointment. Contact #518-234-7897 or email coblib@mvls.info; Website communitylibrary.mvls.info.

The VanWagenen Library SUNY Cobleskill Archives room, Summer Hours when school is out Monday -Thursday 9AM to 3PM – Reference Desk Hours while school is in session Mon.-Thurs. 10AM-4PM & 6PM-10PM, Fri. 10AM-5PM, Sat. 10AM-4PM and Sun. 2PM-10PM. You cannot go into the archives room so it's best to decide what you want to check out before you visit by looking at the website www.cobleskill.edu/library or calling 518-255-5011.



CHARLOTTEVILLE (See Summit)

ESPERANCE

Esperance Historical Society Museum and Library, 123 Church St., Esperance, NY 12066. Museum building is the **1878 Esperance Dist. #1 School, a one-room schoolhouse**. The old cemetery chapel was reconstructed in 2014 and attached to the museum for use as a library. The **Gus LaMonica Carriage Barn of Agricultural History** is also on the property. Open Memorial Day – Labor Day on weekends from 1-4PM. For info email kjones8@nycap.rr.com or Esperancehistoricalsociety@gmail.com. Facebook page is <https://m.facebook.com/EsperanceHistoricalMuseum/>



FULTON

Vintonton One-Room Schoolhouse, Town Green, 856 West Fulton Rd, West Fulton. Open on the Sunday of Memorial Day Weekend and the 2nd and 4th Sundays until Columbus Day Weekend from 12-4pm. The exhibit contains desks, books, and items that were used in a one room schoolhouse. Also there is information on one room schoolhouses and historical items of the Town of Fulton. Facebook page: <https://www.facebook.com/TheTownofFultonHistoricalSociety/> For information contact Al or Joyce Hodder at (518) 827-5618 or ahodder52@gmail.com



West Fulton Ash Tray Museum, P.O. Box 234, West Fulton, NY; WFATMuseum@gmail.com



Panther Creek Hall & Theatre, 1468 Sawyer Hollow Rd, West Fulton, NY 12194, (914) 388-2516, <http://panthercreekarts.com/>

GILBOA

Gilboa Museum and Nicholas J. Juried History Center, 122 Stryker Rd., Gilboa. Museum Hours: 12–4:30 weekends, Memorial Day to Columbus Day. Tours available—607-652-2665, 607-588-9413.

Gilboa Museum features Gilboa Fossils from the Devonian Period, and the History Center focuses on Gilboa Village, Schoharie Reservoir, and our rural public schools. There are rotating exhibits on neighborhoods and lifestyles, and the Gift Shop offers primitive toys, minerals, fossils, jewelry and a broad offering of books. The Dorothy Cox Juried Pavilion hosts outdoor events, and also on site are an agricultural equipment barn, fossil shed, and children's playground. www.facebook.com/groups/gilboahistoricalociety GilboaHistoricalSociety.com GilboaFossils.org catskilltricity.org



HOWES CAVE



Cave House Museum of Mining and Geology, 136 Blowing Rock Rd., Howes Cave. A non-profit museum to showcase mining and geology. Check their Facebook page at <https://www.facebook.com/cavehouse/> for open dates and hours.

Howe Caverns, 255 Discovery Dr, Howes Cave, NY, (518) 296-8900. Open Year-round. Imagine stepping into an elevator that takes you 156 feet below the Earth's surface. When the elevator stops, the doors open into a prehistor-



ic underground cavern six million years in the making. Howe Caverns is a popular tourist attraction, providing cave-goers with a sense of caving or spelunking, without needing the advanced equipment and training usually associated with such adventures. They have a small museum area in the hallway towards the dining room, which discusses the history of the cave and its development. See their website at howecaverns.com, and Facebook page at <https://www.facebook.com/HoweCaverns/>.

Iroquois Museum, 324 Caverns Rd., Howes Cave, For Info. 518-296-8949 or 296-8955, email info@iroquoismuseum.org – www.iroquoismuseum.org

The Iroquois Museum building is a work of art designed in the shape and spirit of the traditional longhouses that once graced the valleys of upstate New York. Archeology and history exhibits focus on the ancestors of the Haudenosaunee (Iroquois). The Museum represents the world's most comprehensive collection of contemporary artwork which celebrates the ancient unity of the Haudenosaunee still expressed in the creative spirit of today's artists. An interactive family area introduces visitors to Haudenosaunee traditions through a variety of crafts, games and technologies. Nature Trails are open year round.



Secret Caverns, 671 Caverns Road, Howes Cave. Open April through December weather dependent. Nestled in the hallowed halls of hollow earth Secret Caverns is a small commercial cavern founded by local civil engineer Roger Mallory along with two intrepid bovine explorers in 1928. The caverns have hosted America's roadside travelers, seekers of subterranean knowledge and adventure since its discovery. Before walking down the 103 steps into the cavern, check out the eclectic mix of prehistoric to historical displays all around the room. Finding Secret Caverns is easy due to their unique billboards. Visit their facebook page for updates at <https://www.facebook.com/SecretCaverns>, and website at www.secretcaverns.com.

JEFFERSON

Fuller District #4 One-Room Schoolhouse, 695 N. Harpersfield Road, Jefferson. Restored 1837 one-room schoolhouse, with a schoolmarm to welcome you and describe it. Open Sundays May 1–Oct 31, Noon to 3:00. Free, donations appreciated.

Nature Trail Just behind the schoolhouse is a nature trail leading past the foundation ruins of an old lumber and grist mill (c. 1900). The trail leads to a wide variety of habitats, plants and wildlife, and a picnic bench where you can rest and snack. An easy walk of about a mile, the trail begins and ends at the schoolhouse. Open year-round. Free.



Maple Museum, 221 Creamery St., Jefferson, by the Village Green. Hosts summer programs.

Nicholas Juried Museum in Judd Hall, 163 Main Street, Jefferson.

Opening soon! See [https://www.facebook.com/The-Jefferson-](https://www.facebook.com/The-Jefferson-Historical-Society-309739662479973/)

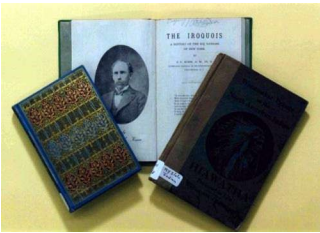
[Historical-Society-309739662479973/](https://www.thejeffersonhistoricalsociety.org/); website [http://](http://www.thejeffersonhistoricalsociety.org/)

www.thejeffersonhistoricalsociety.org/; email historicalsocietyjefferson@gmail.com.



MIDDLEBURGH Town & Village

Dr. Christopher S. Best House & Medical Museum, 1568 Clauverwie Rd., Middleburgh 12122. www.drbesthouse.com Free, donations appreciated. Experience the lifestyle of a father and son whose medical practices as country doctors in this home from 1884 until 1985 are preserved along with the accoutrements of their lives. Witness all aspects of their lived experience including tools for treating countless maladies, along with a cornucopia of chemicals for compounding medications for their own practices and other medical practices and pharmacies in the area. Closed through Labor Day 2022 due to road construction. Tours available by appointment after Labor Day. Plan for a 60 Minute Tour Adventure. 518-827-7200 Deborah Brigadier, Director of Operations debmcarty67@aol.com; See our Facebook page for special events, www.facebook.com/drbesthousemedicalmuseum; Planning a group or specialty tour? Contact Bobbi Ryan, Special Events and Outreach Coordinator BobbiJRyan@gmail.com.



Middleburgh Library History & Genealogy Room, 323 Main St., Middleburgh, 518-827-5142 www.middleburghlibrary.org. 323 Main St., Middleburgh, 518-827-5142 www.middleburghlibrary.org. Hours: Mon. 1:30–8PM; Tue 10AM–8PM; Wed. 10AM–5PM; Thurs. 10AM–8PM; Fri. Closed; Sat. 9-2. Volunteer contact Steve LaMont: hunter947@midtel.net.

RICHMONDVILLE

Bunn Mill, 111 High St., Richmondville. Musical programs in the summer, starting the 1st weekend in June. See Richmondville Historical Society's Facebook page at <https://www.facebook.com/people/Richmondville-Historical-Society/100057416351058/>.



SCHOHARIE



Old Stone Fort Museum Complex and Library, 145 Fort Rd., Schoharie, 2022 Schedule to be announced. Highlight: **The Oliver Schoolhouse**, built in 1863 in the town of Summit, and moved to the museum complex in 1984 through the generosity of Dr. Ward Oliver. It has been restored to its 1890-1914 appearance. The schoolhouse features hands-on activities for visitors. For updates please visit our website at www.theoldstonefort.org or our Facebook page at <https://www.facebook.com/oldstonefort>. To inquire about scheduling tours and library visits call 518/295-7192 or email office@theoldstonefort.org.

Schoharie Library, 103 Knowler Ave., Schoharie. Hours M,T,F 11-6; Th 12-7 ; Sat 10-5. Closed Wed & Sun. (518) 295-7127. Has a small archives. www.schoharielibrary.org

1743 Palatine House Museum – Old Lutheran Parsonage. 102 Warner Hill Road. Built for Schoharie County's first Lutheran minister, the house is the oldest existing building in Schoharie County and is now a living history museum. Open on Saturday and Sunday, noon to 4 PM, from Memorial Day weekend to Columbus Day weekend. Open for tours upon request. 518 231-3471. tshuart3@gmail.com.



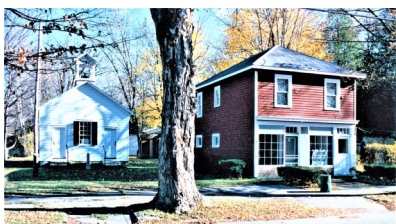
Schoharie Valley Railroad Museum, 143 Depot Lane. The museum complex occupies 4 acres on Depot Lane. The Station House, Freight Shed/Engine House, Weigh Station, Frisbieville and Fair Street Waiting Stations, Borden's Creamery Building #99 and Mill Building form an unusually intact railroad complex. The 1891 Middleburgh & Schoharie Railroad restored passenger car, a boxcar, a flat car, and a 1914 wooden caboose form the collection of railroad rolling stock. Tours Sat. & Sun., noon to 4 pm, Memorial Day through Columbus Day. 518-295-7505. SchoharieHeritage.org

SEWARD

The Glove Museum, 2155 St. Rt. 165, Dorloo. Open Thursday through Sunday 12-6pm, from July 1-November 1. Museum about the history and making of gloves.



SHARON



Sharon Historical Society Museum & One-Room Schoolhouse at 238 Main St./Rte. 10. Open Friday thru Sunday Memorial day thru Labor Day and August 1-4PM. PO Box 363, Sharon Springs, NY 13459. Curator – Michelle McCallion, sharonhistoricalsocietyny@gmail.com. Visit their website at sharonhistoricalsocietyny.org. Questions? Call 518-860-5513 or email sharonhistoricalsocietyny@gmail.com.

SUMMIT

Charlotteville 2-Room Schoolhouse, 641 Charlotte Valley Rd. Charlotteville Summit District #14 was in session 1894-1951. Breakfasts held the 3rd Sunday of the month 8-11AM May through October. Their library is open during breakfast Sundays. Also used for community gatherings. Check their Facebook page at <https://www.facebook.com/charlottevilleschoolhouse/>. Email: csrc641@gmail.com



The Museum of the History of Charlotteville, the Anonymous Arts Museum and the historic Charlotteville Methodist Church (1830-32) at 606-610 Charlotte Valley Rd. They are open Fathers Day through August, every Sunday from Noon to 3PM. There are extensive artifacts and photographs exhibited in each museum and a library of primary sources, genealogies, cemetery records and original documents related to the history of the hamlet of Charlotteville. For further information call Marilynn Karp at (607) 397-8606 or email marilynn.karp@nyu.edu.

WRIGHT

Gallupville House, State Rte 443, 518-872-1705, used for community events.

